

REHABILITATION OF GARBAHAAREY YOUTH CENTRE-KIS055



ARCHITECTS



GeConsult
ARCHITECTURE & ENGINEERING CONSULTANTS
 Office No. 529,
 5th Floor, 680 Hotel Building,
 Muindi Mbingu Street,
 Off Kenyatta Avenue,
 geconsultteam@gmail.com
 www.geconsultarchitects.com
 P.O Box 103525 - 00101 Nairobi, Kenya
 Tel: +254 724 008 839 / +254 725 178 875

PROJECT DETAILS

Client:



**JUBALAND
 STATE OF
 SOMALIA**

Implementation Partner:



IOM/SSI

Project title:

**GARBAHAAREY YOUTH CENTRE
 -KIS055**

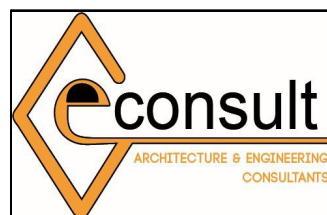
Drawing Title: COVER PAGE		Revision No.	
Drawn by: A.K. / S.N	Checked by: Hassan Abdisamad	Sheet No. N/A	Scale:
Date: August, 2017	ARCHITECTURAL DRAWINGS		

REHABILITATION OF GARBAHAAREY YOUTH CENTRE-KIS055



SHEET NO.	CONTENTS
00	G.P.S CO-ORDINATES
01	PROPOSED SITE PLAN
02	PROPOSED SET-OUT PLAN
03	PROPOSED FLOOR PLAN
04	ELEVATIONS
05	ROOF PLAN AND SECTIONS
06	ELECTRICAL LIGHTING
07	ELECTRICAL POWER OUTLET
08	SCHEDULES
09	STRUCTURAL DETAILS
3D-01	3 DIMENSIONAL PROJECTION 01
3D-02	3 DIMENSIONAL PROJECTION 02
3D-03	3 DIMENSIONAL PROJECTION 03
3D-04	3 DIMENSIONAL PROJECTION 04
3D-05	3 DIMENSIONAL PROJECTION 05

ARCHITECTS



GeConsult
ARCHITECTURE & ENGINEERING CONSULTANTS
Office No. 529,
5th Floor, 680 Hotel Building,
Muindi Mbingu Street,
Off Kenyatta Avenue,
geconsultteam@gmail.com
www.geconsultarchitects.com
P.O Box 103525 - 00101 Nairobi, Kenya
Tel: +254 724 008 839 / +254 725 178 875

PROJECT DETAILS

Client:



JUBALAND
STATE OF
SOMALIA

Implementation Partner:



IOM/SSI

Project title:

GARBAHAAREY YOUTH CENTRE
-KIS055

Drawing Title: INDEX SHEET		Revision No. --	
Drawn by: A.K / S.N	Checked & Approved by: Hassan Abdisamad	Sheet No. N/A	Scale:
Date: August, 2017	ARCHITECTURAL DRAWINGS		



ARCHITECTS



GeConsult
 ARCHITECTURE & ENGINEERING CONSULTANTS
 Office No. 529,
 5th Floor, 680 Hotel Building,
 Muindi Mbingu Street,
 Off Kenyatta Avenue,
 geconsultteam@gmail.com
 www.geconsultarchitects.com
 P.O Box 103525 - 00101 Nairobi, Kenya
 Tel:+254 724 008 839 / +254 725 178 875

PROJECT DETAILS

Client:



**JUBALAND
 STATE OF
 SOMALIA**

Implementation Partner:

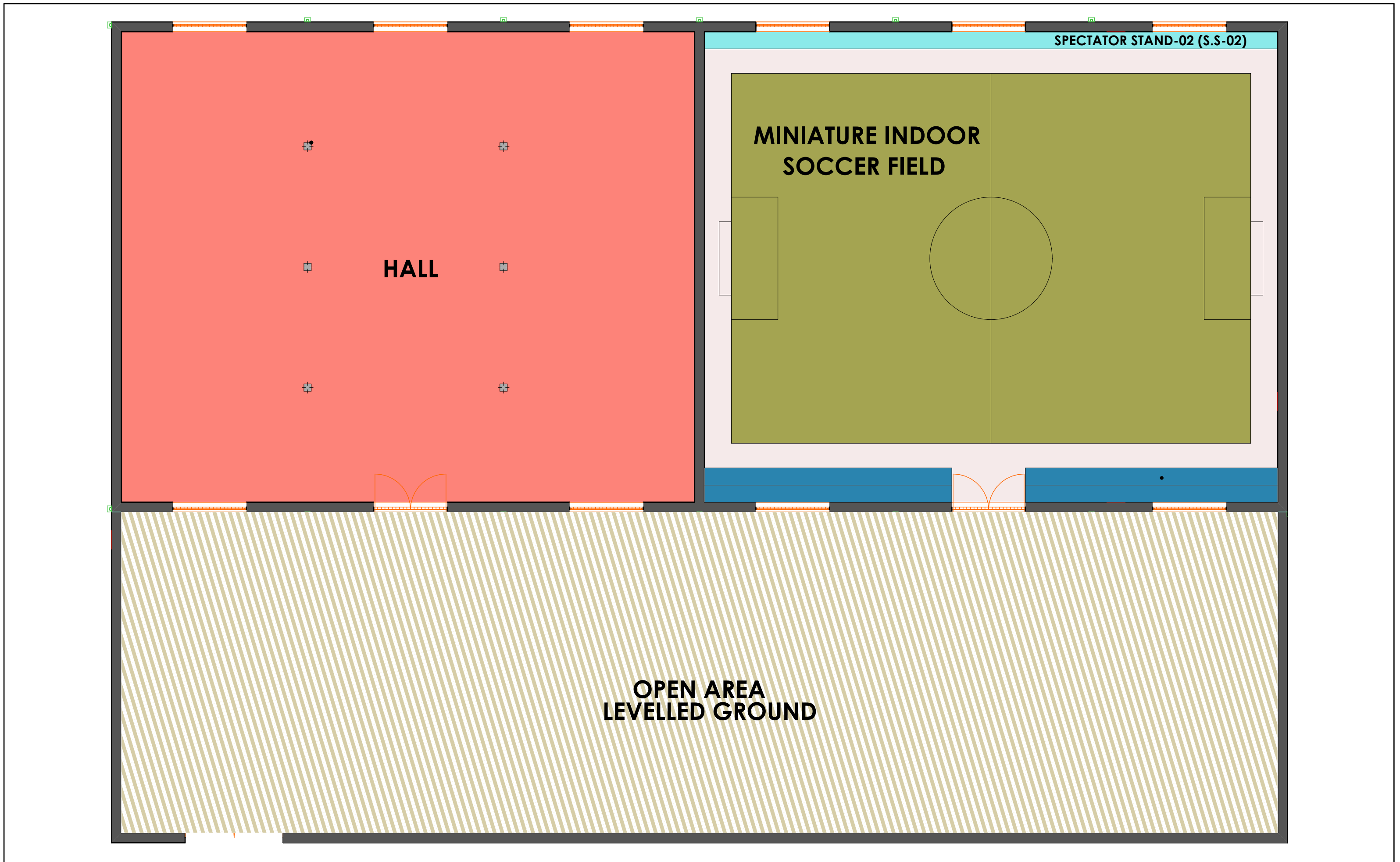


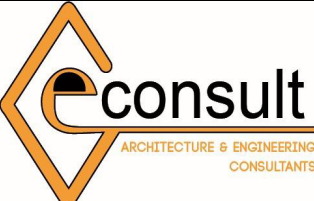



IOM/SSI

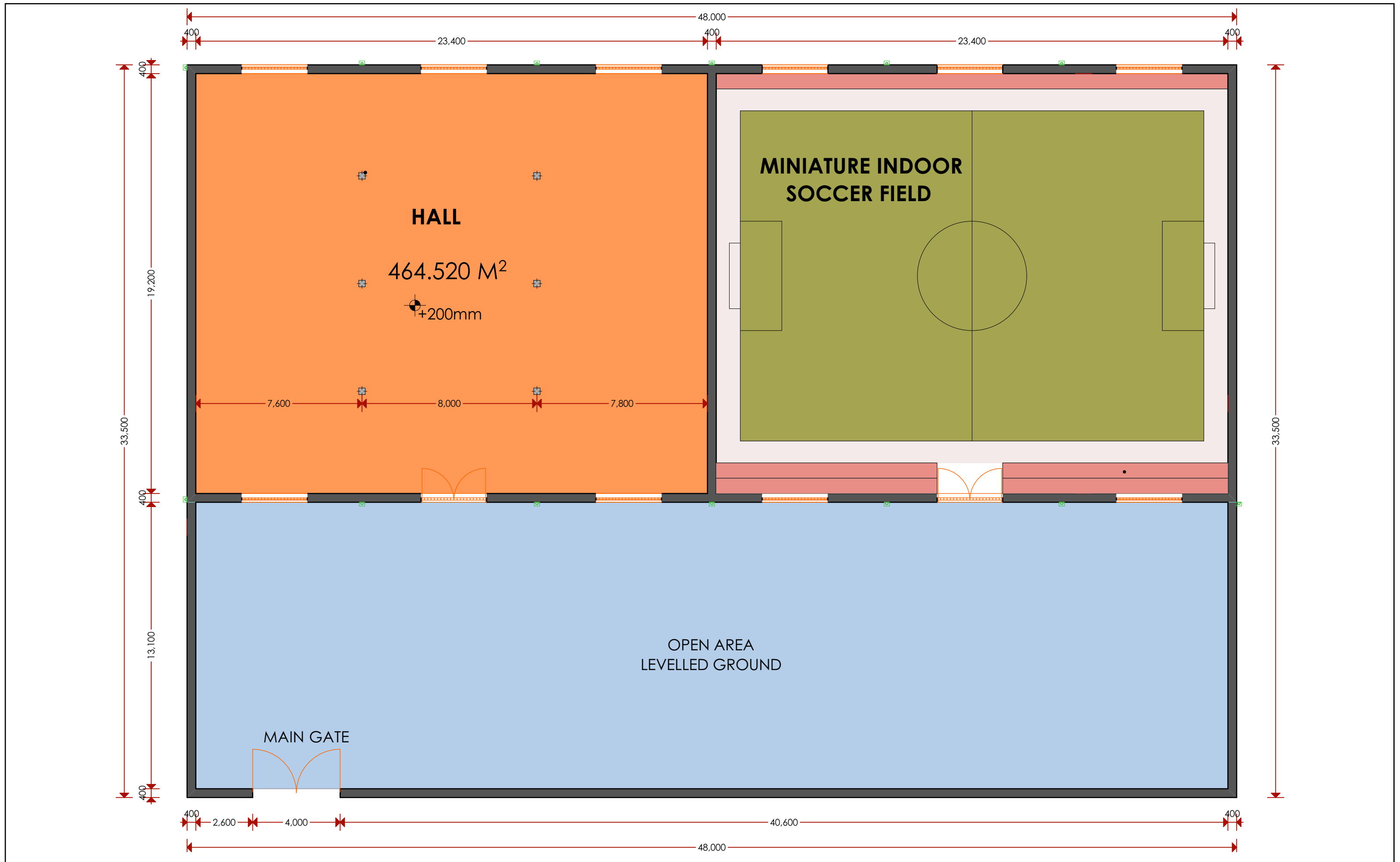
Project title:

**GARBAHAAREY YOUTH CENTRE
 -KIS055**

Drawing Title: G.P.S CO-ORDINATES		Revision No. --	
Drawn by: A.K / S.N	Checked & Approved by: Hassan Abdisamad	Sheet No. 00	Scale: N/A
Date: August, 2017	ARCHITECTURAL DRAWINGS		



ARCHITECTS		PROJECT DETAILS		Drawing Title:		Revision No.					
 GeConsult ARCHITECTURE & ENGINEERING CONSULTANTS Office No. 529, 5th Floor, 680 Hotel Building, Muindi Mbingu Street, Off Kenyatta Avenue, geconsultteam@gmail.com www.geconsultarchitects.com P.O Box 103525 - 00101 Nairobi, Kenya Tel: +254 724 008 839 / +254 725 178 875		Client:		Implementation Partner:		Project title:					
		 JUBALAND STATE OF SOMALIA		 IOM/SSI		GARBAHAAREY YOUTH CENTRE -KIS055					
											
				Drawn by:		Checked & Approved by:		Sheet No.		Scale:	
				A.K / S.N		Hassan Abdisamad		01		1:150	
				Date:		August, 2017		ARCHITECTURAL DRAWINGS			



ARCHITECTS



GeConsult
 ARCHITECTURE & ENGINEERING CONSULTANTS
 Office No. 529,
 5th Floor, 680 Hotel Building,
 Muindi Mbingu Street,
 Off Kenyatta Avenue,
 geconsultteam@gmail.com
 www.geconsultarchitects.com
 P.O Box 103525 - 00101 Nairobi, Kenya
 Tel: +254 724 008 839 / +254 725 178 875

PROJECT DETAILS

Client:



JUBALAND STATE OF SOMALIA

Implementation Partner:

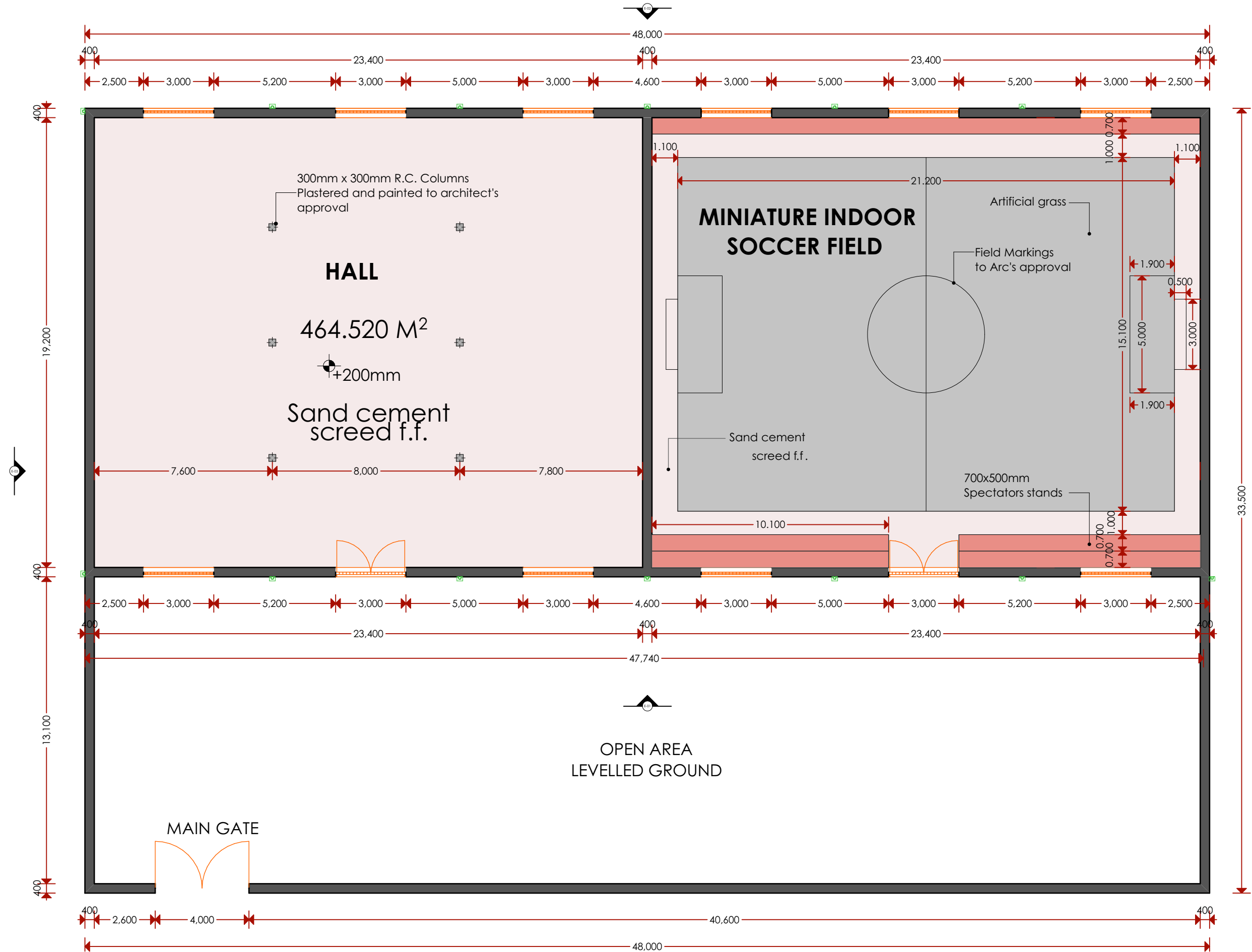


IOM/SSI

Project title:

GARBAHAAREY YOUTH CENTRE -KIS055

Drawing Title:		Revision No.	
SET-OUT PLAN		--	
Drawn by:	Checked & Approved by:	Sheet No.	Scale:
A.K / S.N	Hassan Abdisamad	02	1:150
Date:	ARCHITECTURAL DRAWINGS		
August, 2017			



ARCHITECTS



GeConsult
 ARCHITECTURE & ENGINEERING CONSULTANTS
 Office No. 529,
 5th Floor, 680 Hotel Building,
 Muindi Mbingu Street,
 Off Kenyatta Avenue,
 geconsultteam@gmail.com
 www.geconsultarchitects.com
 P.O Box 103525 - 00101 Nairobi, Kenya
 Tel: +254 724 008 839 / +254 725 178 875

PROJECT DETAILS

Client:



**JUBALAND
 STATE OF
 SOMALIA**

Implementation Partner:



IOM/SSI

Project title:

**GARBAHAAREY YOUTH CENTRE
 -KIS055**

Drawing Title: FLOOR PLAN		Revision No. --	
Drawn by: A.K / S.N	Checked & Approved by: Hassan Abdisamad	Sheet No. 03	Scale: 1:150
Date: August, 2017	ARCHITECTURAL DRAWINGS		

ROOF SPECIFICATION

pitch 25.0 deg gauge 28 box profile
 100x50mm rafters at 1.5M intervals
 100x50mm ties and struts
 100x75mm wall plate
 fascia board-and gutter to S.E. details
 all timber to be cured

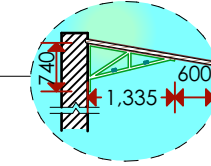
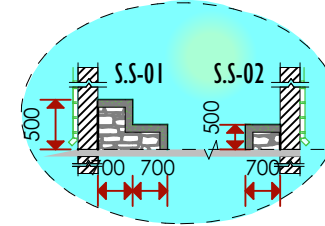
300 mm wide 200 mm deep
 G.I. Gutter with 150 mm
 diameter downpipes on
 both ends

600mm wide x 3000mm steel
 casement window to schedule

600mm wide x 3000mm concrete
 ventilation blocks

600mm wide x 3000mm concrete
 ventilation blocks

400mm thick
 masonry rubble wall plastered
 and painted to Arc's specs



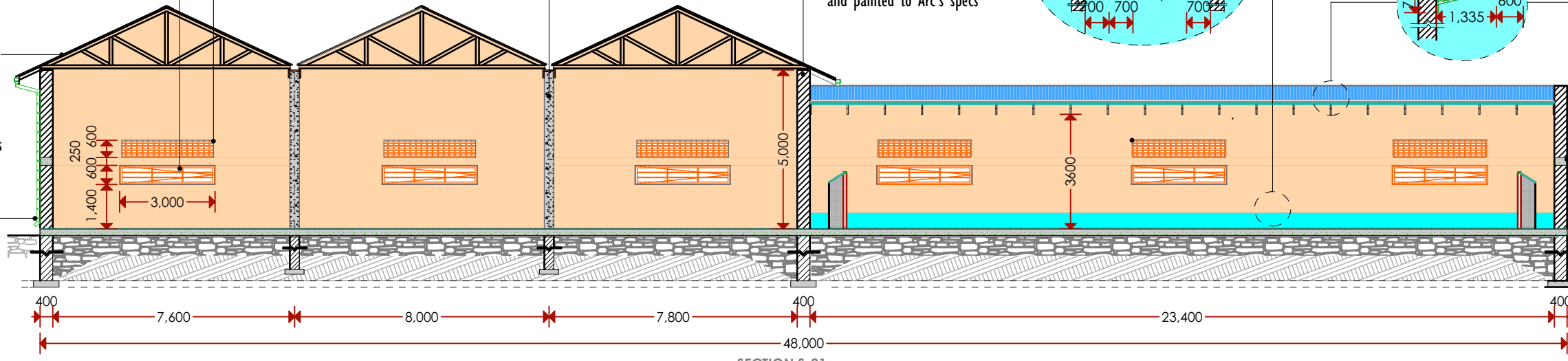
STEEL ROOF DETAIL

pitch 10
 40x25x1.5thick Hollow Tube Section H.S
 ties and struts at 1168 c.c intervals

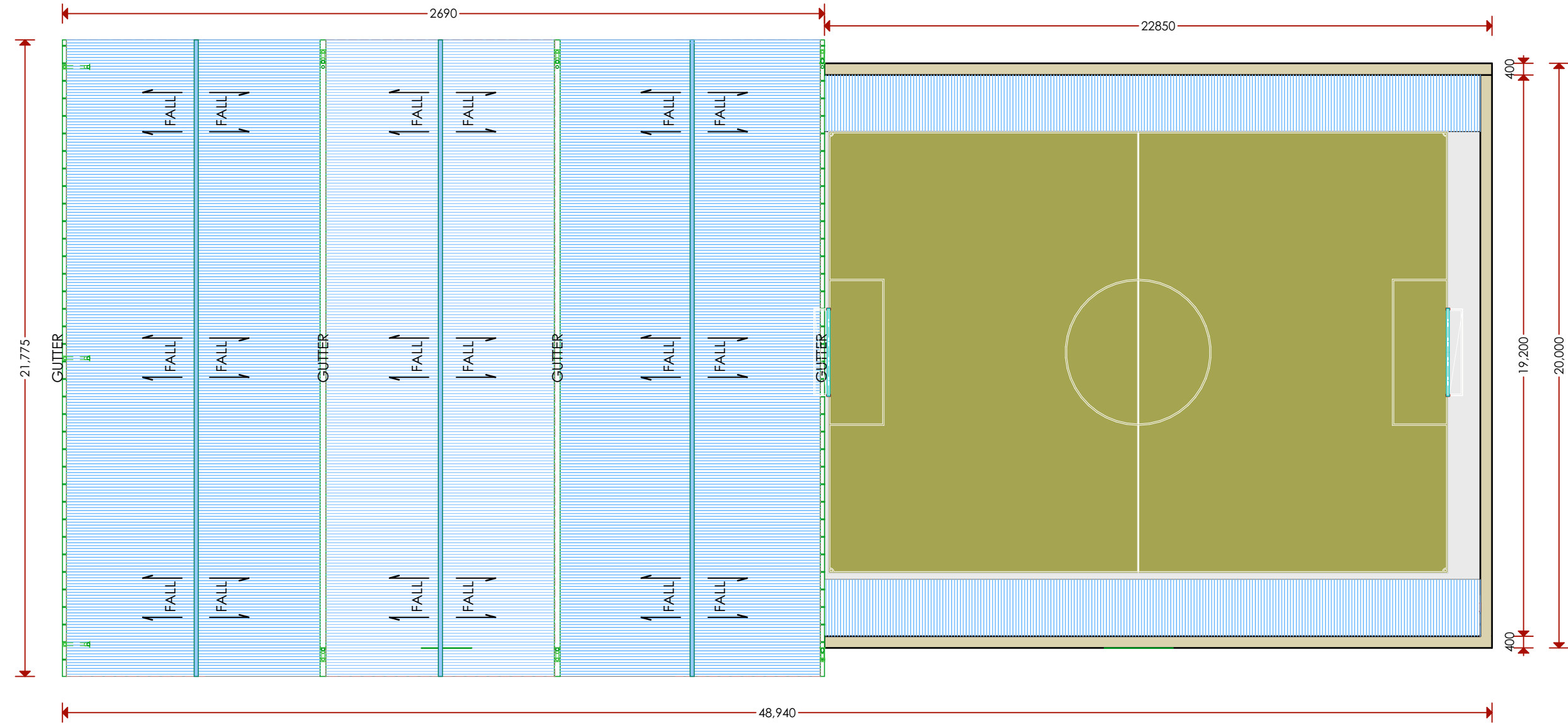
400x200mm thick
 concrete ring beam

FOUNDATION SPECIFICATION

150mm thick slab laid on app.dpm and blinding
 - b.r.c mesh
 - 800x200mm deep R.C strip fnd to S
 - depth to be determined on site.
 - hardcore fill consolidated at 300mm level



SECTION S-01



ARCHITECTS

GeConsult
 ARCHITECTURE & ENGINEERING CONSULTANTS
 Office No. 529,
 5th Floor, 680 Hotel Building,
 Muindi Mbingu Street,
 Off Kenyatta Avenue,
 geconsultteam@gmail.com
 www.geconsultarchitects.com
 P.O Box 103525 - 00101 Nairobi, Kenya
 Tel:+254 724 008 839 / +254 725 178 875

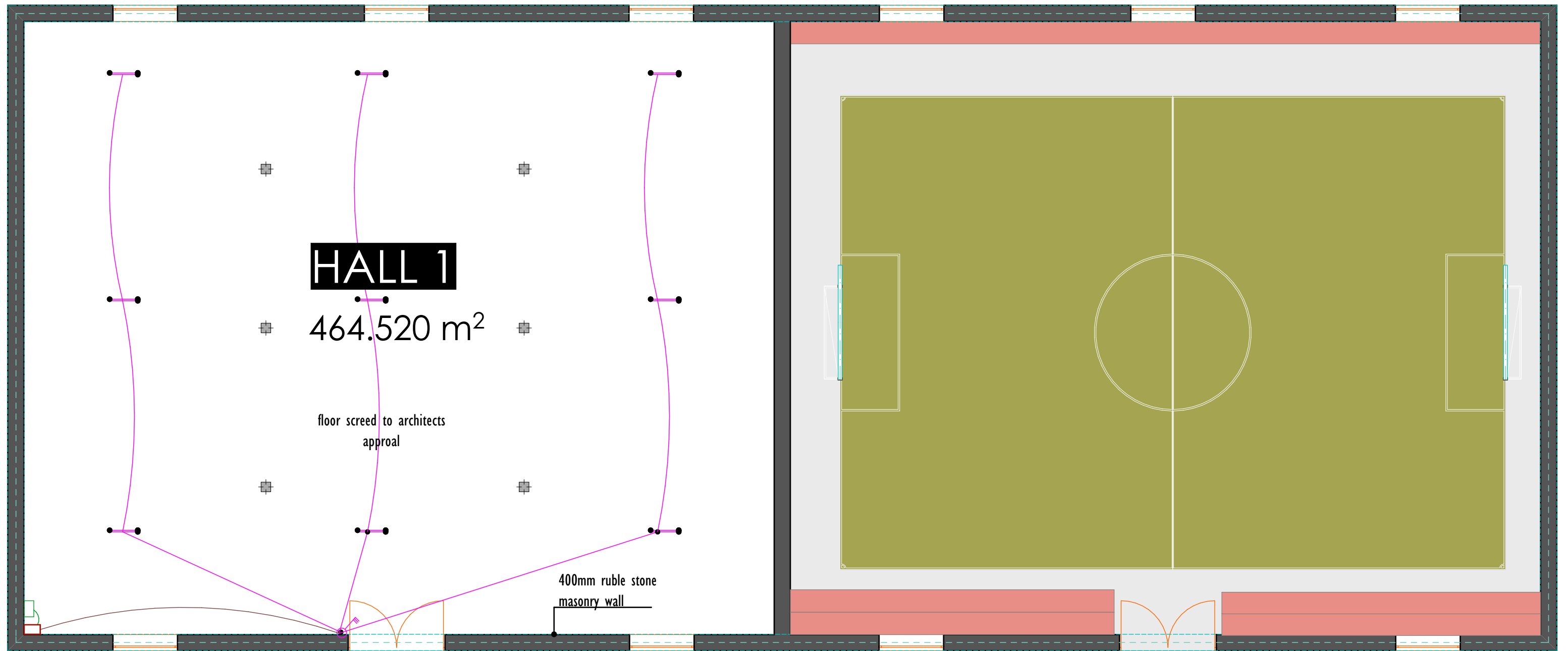
PROJECT DETAILS

Client: JUBALAND STATE OF SOMALIA

Implementation Partner: IOM/SSI

Project title: GARBAHAAREY YOUTH CENTRE -KIS055

Drawing Title: ROOF PLAN AND SECTION		Revision No. --	
Drawn by: A.K / S.N	Checked & Approved by: Hassan Abdisamad	Sheet No. 05	Scale: 1:160
Date: August, 2017	ARCHITECTURAL DRAWINGS		



LEGEND

	4FT Flourescent Light		Lighting circuit
	Point Light		Lighting mains
	Twin Sockets with Switch		3 gang 1 way switch
	Consumer Unit		Power mains to CU
	Power outlet circuit		Main Distribution Board
			Floodlights

ARCHITECTS



GeConsult
 ARCHITECTURE & ENGINEERING CONSULTANTS
 Office No. 529,
 5th Floor, 680 Hotel Building,
 Muindi Mbingu Street,
 Off Kenyatta Avenue,
 geconsultteam@gmail.com
 www.geconsultarchitects.com
 P.O Box 103525 - 00101 Nairobi, Kenya
 Tel: +254 724 008 839 / +254 725 178 875

PROJECT DETAILS

Client:



JUBALAND
 STATE OF
 SOMALIA

Implementation Partner:

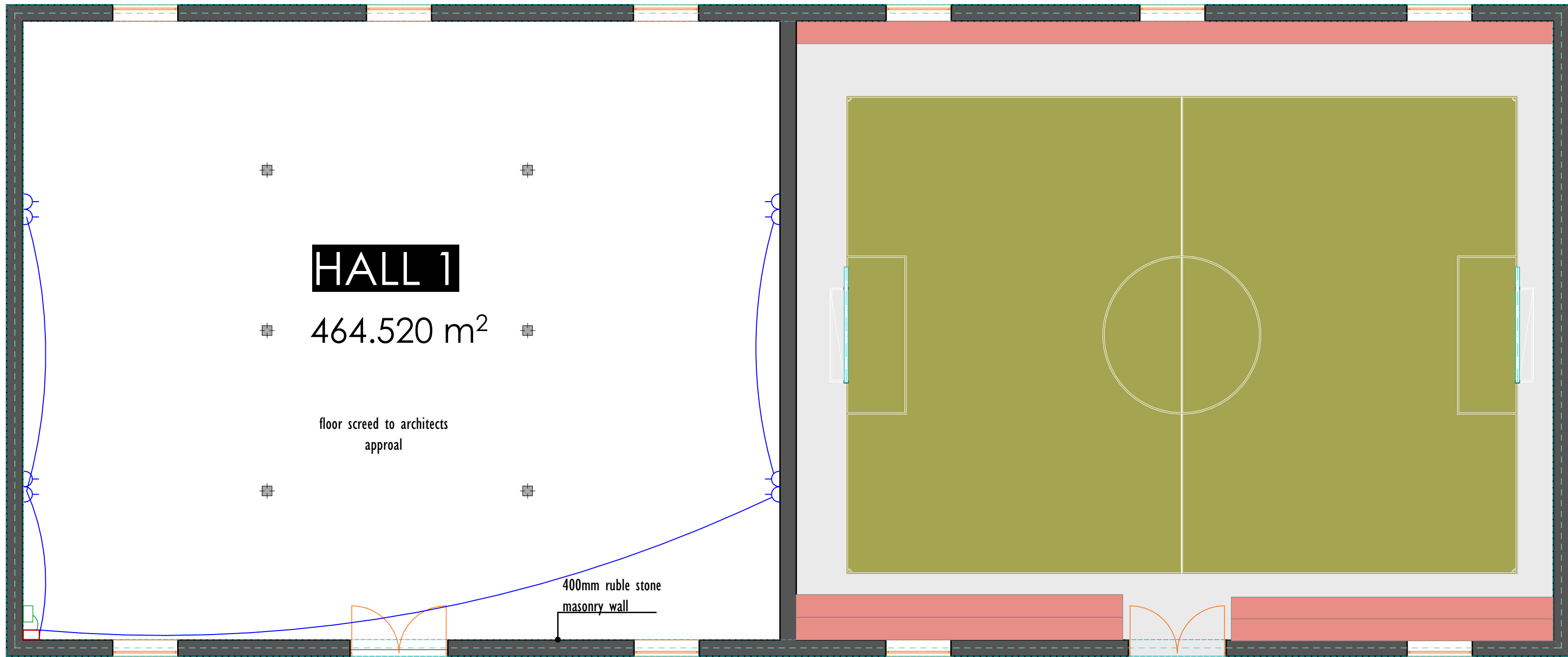


IOM/SSI

Project title:

GARBAHAAREY YOUTH CENTRE
 -KIS055

Drawing Title: ELECTRICAL LIGHTING		Revision No. --	
Drawn by: A.K / S.N	Checked & Approved by: Hassan Abdisamad	Sheet No. 06	Scale: 1:160
Date: August, 2017	ELECTRICAL DRAWINGS		



LEGEND

	4FT Flourescent Light
	Point Light
	Twin Sockets with Switch
	Consumer Unit
	Power outlet circuit

	Lighting circuit
	Lighting mains
	3 gang 1 way switch
	Power mains to CU
	Main Distribution Board
	Floodlights

ARCHITECTS



GeConsult
ARCHITECTURE & ENGINEERING CONSULTANTS
Office No. 529,
5th Floor, 680 Hotel Building,
Muindi Mbingu Street,
Off Kenyatta Avenue,
geconsultteam@gmail.com
www.geconsultarchitects.com
P.O Box 103525 - 00101 Nairobi, Kenya
Tel: +254 724 008 839 / +254 725 178 875

PROJECT DETAILS

Client:



JUBALAND
STATE OF
SOMALIA

Implementation Partner:



IOM/SSI

Project title:

GARBAHAAREY YOUTH CENTRE
-KIS055

Drawing Title: ELECTRICAL POWER OUTLET		Revision No. --	
Drawn by: A.K / S.N	Checked & Approved by: Hassan Abdisamad	Sheet No. 07	Scale: 1:100
Date: August, 2017	ELECTRICAL DRAWINGS		

WINDOWS AND DOORS SCHEDULE

QUANTITY	12	10	2	1
MATERIAL	Concrete	Steel & Glass	Steel	Steel
DESCRIPTION	Fixed precast concrete ventilation blocks	Steel casement window to fabricator's details		Steel double swing doors to fabricators details

AREAS SCHEDULE

SPACE	QTY	AREA	FLOORING	SKIRTING
HALL	1	464.52M ²	Sand cement screed	Sand cement screed
FOOTBALL PITCH	1	464.52M ²	Artificial grass on sand cement screed	Sand cement screed

ARCHITECTS



GeConsult
 ARCHITECTURE & ENGINEERING CONSULTANTS
 Office No. 529,
 5th Floor, 680 Hotel Building,
 Muindi Mbingu Street,
 Off Kenyatta Avenue,
 geconsultteam@gmail.com
 www.geconsultarchitects.com
 P.O Box 103525 - 00101 Nairobi, Kenya
 Tel: +254 724 008 839 / +254 725 178 875

PROJECT DETAILS

Client:



JUBALAND
 STATE OF
 SOMALIA

Implementation Partner:



IOM/SSI

Project title:

GARBAHAAREY YOUTH CENTRE
 -KIS055

Drawing Title:

SCHEDULES

Revision No.

Drawn by:

A.K. / S.N

Checked by:

Hassan Abdisamad

Sheet No.

08

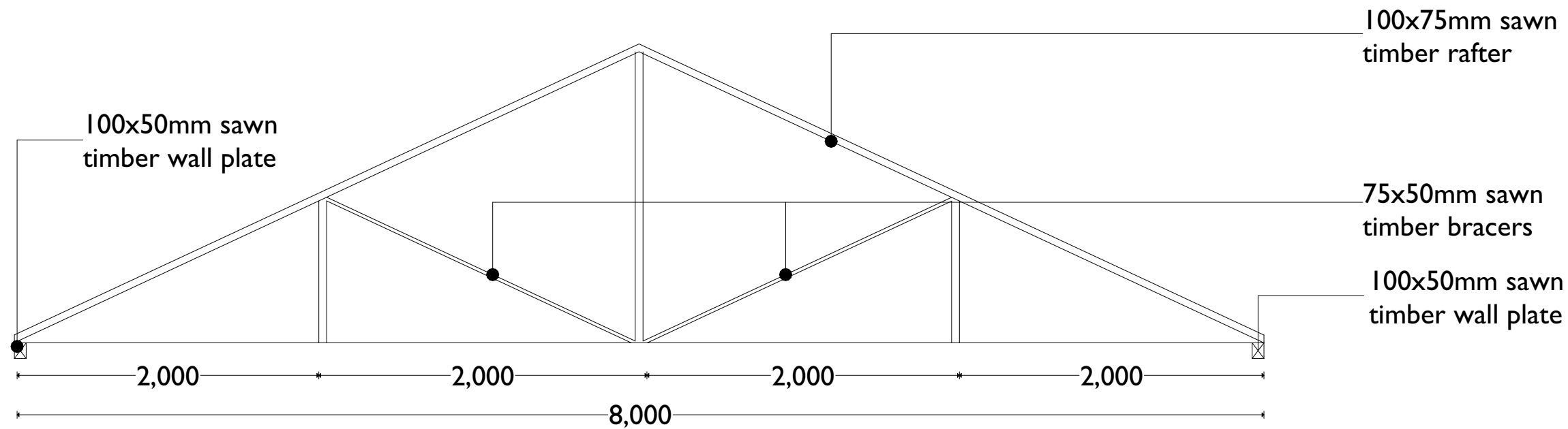
Scale:

1:100

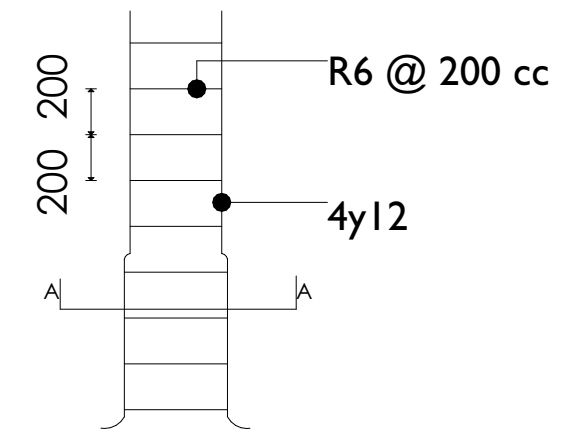
Date:

August, 2017

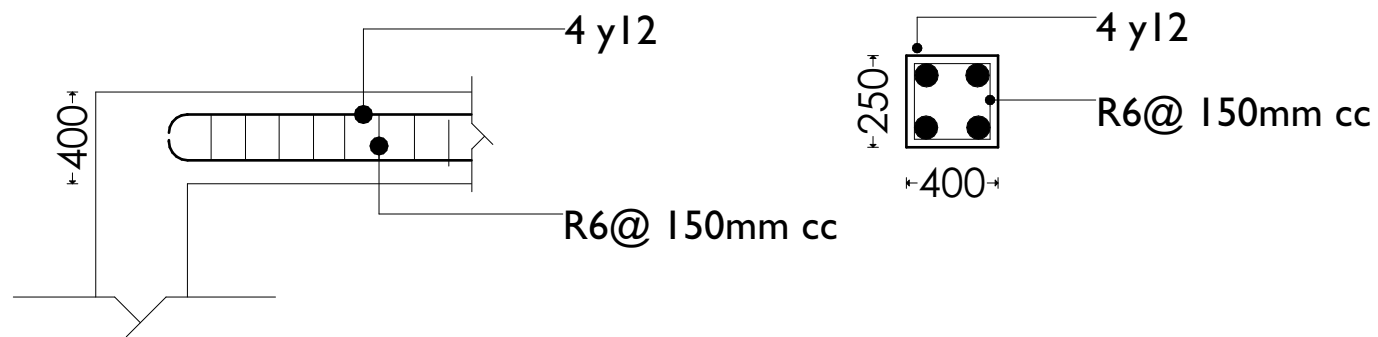
ARCHITECTURAL DRAWINGS



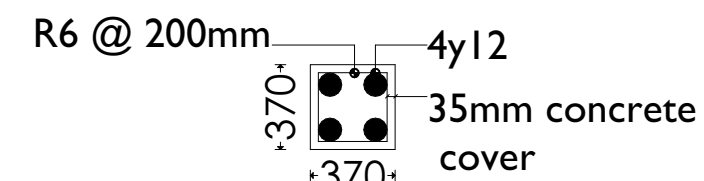
Roof truss details



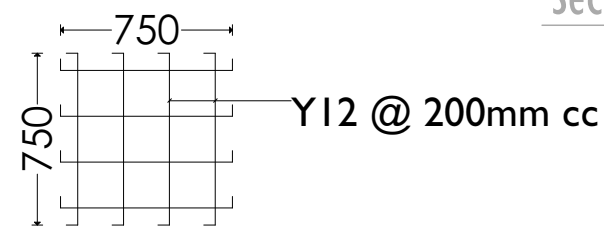
Column longitudinal layout details



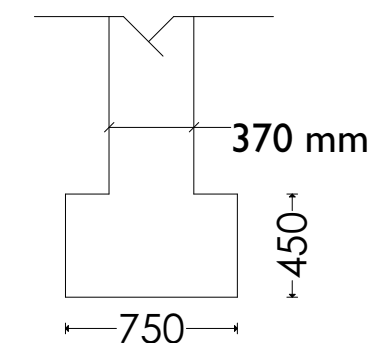
Ring beam details



Section A-A details



Footing R.C details



Column & footing longitudinal layout details

ARCHITECTS



GeConsult
 ARCHITECTURE & ENGINEERING CONSULTANTS
 Office No. 529,
 5th Floor, 680 Hotel Building,
 Muindi Mbingu Street,
 Off Kenyatta Avenue,
 geconsultteam@gmail.com
 www.geconsultarchitects.com
 P.O Box 103525 - 00101 Nairobi, Kenya
 Tel: +254 724 008 839 / +254 725 178 875

PROJECT DETAILS

Client:



JUBALAND
 STATE OF
 SOMALIA

Implementation Partner:



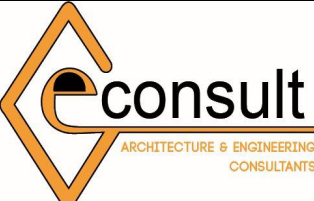


IOM/SSI

Project title:

GARBAHAAREY YOUTH CENTRE
 -KIS055

Drawing Title: STRUCTURAL DETAILS		Revision No.	
Drawn by: A.K. / S.N	Checked by: Hassan Abdisamad	Sheet No. 09	Scale: 1:100
Date: August, 2017	ARCHITECTURAL DRAWINGS		






ARCHITECTS		PROJECT DETAILS			Drawing Title:		Revision No.		
 GeConsult ARCHITECTURE & ENGINEERING CONSULTANTS Office No. 529, 5th Floor, 680 Hotel Building, Muindi Mbingu Street, Off Kenyatta Avenue, geconsultteam@gmail.com www.geconsultarchitects.com P.O Box 103525 - 00101 Nairobi, Kenya Tel: +254 724 008 839 / +254 725 178 875		Client:	Implementation Partner:	Project title:	3 DIMENSIONAL PROJECTION		--		
		 JUBALAND STATE OF SOMALIA	 IOM/SSI	GARBAHAAREY YOUTH CENTRE -KIS055	Drawn by:	Checked & Approved by:	Sheet No.	Scale:	
					A.K / S.N	Hassan Abdisamad	3D-01		
					Date:	August, 2017		ARCHITECTURAL DRAWINGS	



ARCHITECTS		PROJECT DETAILS		Drawing Title:		Revision No.			
 <p>GeConsult ARCHITECTURE & ENGINEERING CONSULTANTS Office No. 529, 5th Floor, 680 Hotel Building, Muindi Mbingu Street, Off Kenyatta Avenue, geconsultteam@gmail.com www.geconsultarchitects.com P.O Box 103525 - 00101 Nairobi, Kenya Tel: +254 724 008 839 / +254 725 178 875</p>		<p>Client:</p>  <p>JUBALAND STATE OF SOMALIA</p>		<p>Implementation Partner:</p>  <p>IOM/SSI</p>		<p>Project title:</p> <p>GARBAHAAREY YOUTH CENTRE -KIS055</p>		<p>3 DIMENSIONAL PROJECTION</p> <p>---</p>	
<p>Drawn by:</p> <p>A.K / S.N</p>		<p>Checked & Approved by:</p> <p>Hassan Abdisamad</p>		<p>Sheet No.</p> <p>3D-02</p>		<p>Scale:</p>		<p>ARCHITECTURAL DRAWINGS</p>	
<p>Date:</p> <p>August, 2017</p>									




ARCHITECTS		PROJECT DETAILS		Drawing Title:		Revision No.			
 GeConsult ARCHITECTURE & ENGINEERING CONSULTANTS Office No. 529, 5th Floor, 680 Hotel Building, Muindi Mbingu Street, Off Kenyatta Avenue, geconsultteam@gmail.com www.geconsultarchitects.com P.O Box 103525 - 00101 Nairobi, Kenya Tel: +254 724 008 839 / +254 725 178 875		Client:		Implementation Partner:		3 DIMENSIONAL PROJECTION		--	
		 JUBALAND STATE OF SOMALIA		 IOM/SSI		Project title:		Drawn by: A.K / S.N Checked & Approved by: Hassan Abdisamad Sheet No. 3D-03 Scale:	
				GARBAHAAREY YOUTH CENTRE -KIS055		Date: August, 2017		ARCHITECTURAL DRAWINGS	



ARCHITECTS		PROJECT DETAILS		Drawing Title:		Revision No.			
 <p>GeConsult ARCHITECTURE & ENGINEERING CONSULTANTS Office No. 529, 5th Floor, 680 Hotel Building, Muindi Mbingu Street, Off Kenyatta Avenue, geconsultteam@gmail.com www.geconsultarchitects.com P.O Box 103525 - 00101 Nairobi, Kenya Tel:+254 724 008 839 / +254 725 178 875</p>		Client:  <p>JUBALAND STATE OF SOMALIA</p>		Implementation Partner:  <p>IOM/SSI</p>		Project title: <p>GARBAHAAREY YOUTH CENTRE -KIS055</p>		<p>3 DIMENSIONAL PROJECTION</p> <p>--</p>	
Drawn by: <p>A.K / S.N</p>		Checked & Approved by: <p>Hassan Abdisamad</p>		Sheet No. <p>3D-04</p>		Scale:		ARCHITECTURAL DRAWINGS	
Date: August, 2017									



ARCHITECTS		PROJECT DETAILS			Drawing Title:		Revision No.		
 GeConsult ARCHITECTURE & ENGINEERING CONSULTANTS Office No. 529, 5th Floor, 680 Hotel Building, Muindi Mbingu Street, Off Kenyatta Avenue, geconsultteam@gmail.com www.geconsultarchitects.com P.O Box 103525 - 00101 Nairobi, Kenya Tel: +254 724 008 839 / +254 725 178 875		Client:	Implementation Partner:	Project title:	3 DIMENSIONAL PROJECTION		--		
		 JUBALAND STATE OF SOMALIA	 IOM/SSI	GARBAHAAREY YOUTH CENTRE -KIS055	Drawn by:	Checked & Approved by:	Sheet No.	Scale:	
					A.K / S.N	Hassan Abdisamad	3D-05		
					Date:	August, 2017		ARCHITECTURAL DRAWINGS	